

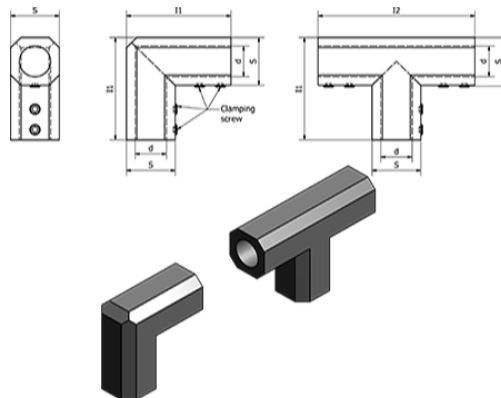
# Data Sheet



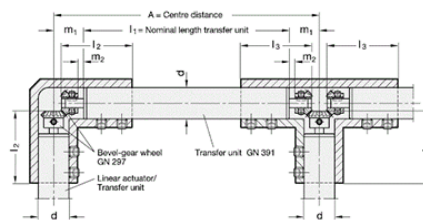
Article number: 2029828B18TSW

Description: E+G Angular gear housing - GN 298-28-B18-T-SW

## Measures



Assembly of linear actuators and transfer units with bevel gear wheels in housings GN 298



d	Linear actuator / transfer unit	$l_2$	$l_3$	$m_1$	$m_2$	Bevel gear wheel	Housing
18		42	41	20	4	GN 297-17.5-K6	GN 298-28-B18-W/T-SW
30		58	57	25	1	GN 297-26-K8	GN 298-40-B30-W/T-SW
40		74	72	32	1	GN 297-35-K12	GN 298-50-B40-W/T-SW
50		90	82	32	1	GN 297-35-K12	GN 298-60-B50-W/T-SW

Length of the transfer unit GN 99:  
 $l_1 = A - 2 \times m_1$

d = B18

l1 = 60

l2 = 90

S = 28

Weight (g) = 139